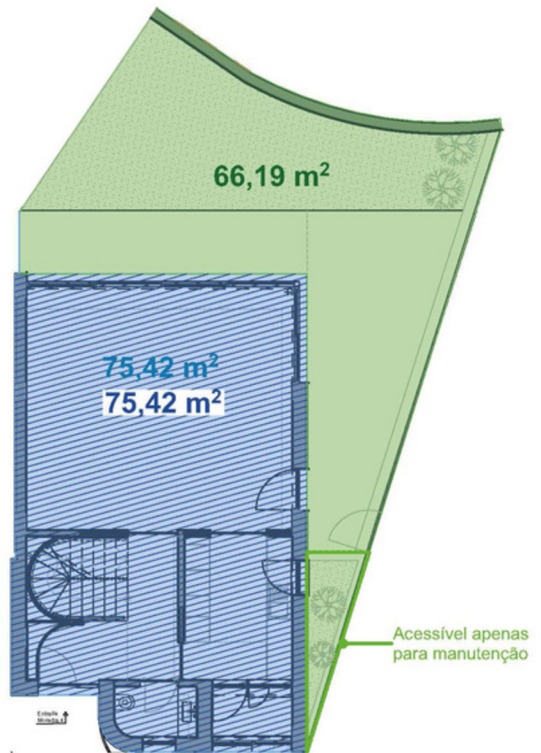
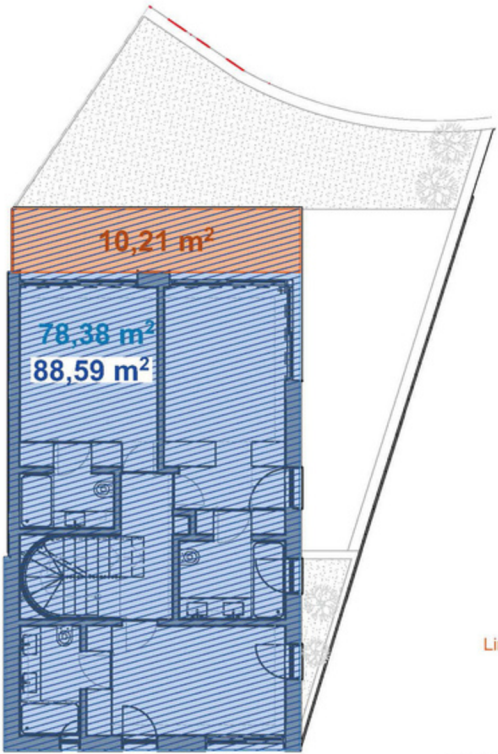


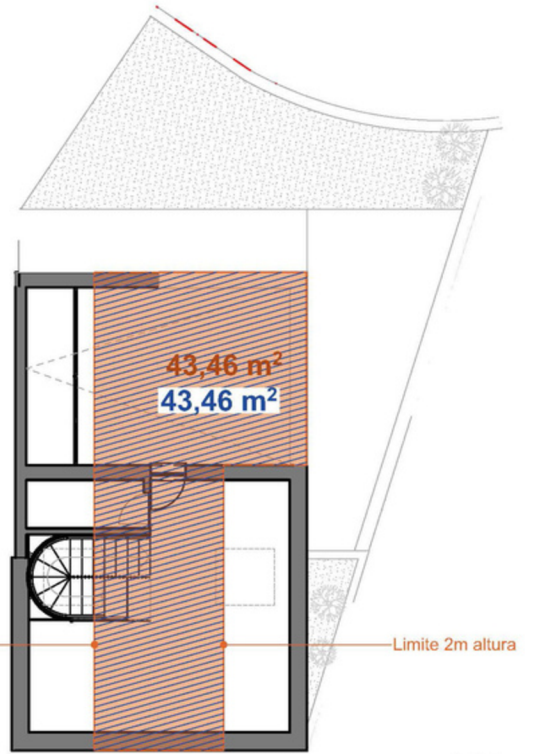
01. Piso Cave 1:150



02. Piso 00 1:150



03. Piso 01 1:150

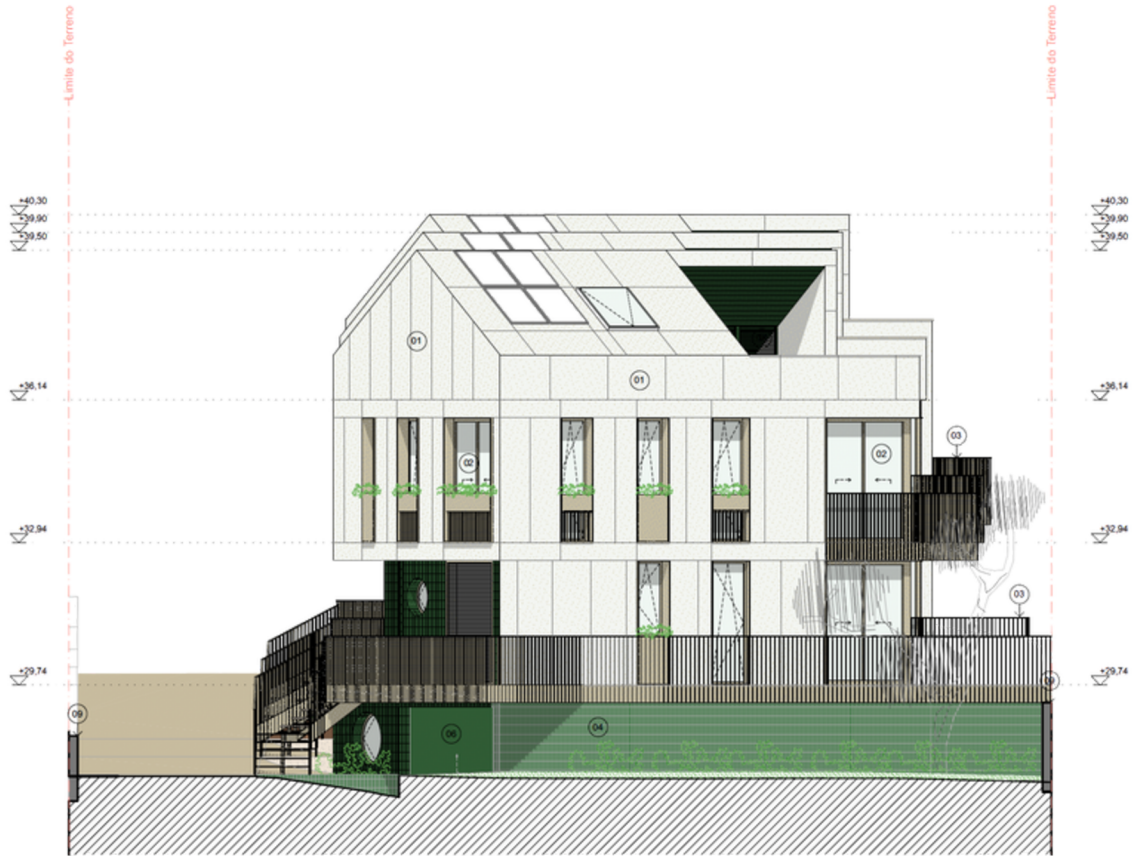


04. Piso Sótão 1:150

VILLA 04
Morada 4

A+ARCHITECTURE © all rights reserved
To be used for illustrative purposes only

<p>Área Bruta Construção Privativa</p> <p>Piso Cave = 0 m² Piso 00 = 75,42 m² Piso 01 = 78,38 m² Piso Sótão = 0 m²</p> <p>Total = 153,80 m²</p>	<p>Área Total Dependente</p> <p>Piso Cave = 80,44 m² Piso 00 = 0 m² Piso 01 = 10,21 m² Piso Sótão = 43,46 m²</p> <p>Total = 134,11 m²</p>	<p>Área Comercial</p> <p>Piso Cave = 0 m² Piso 00 = 75,42 m² Piso 01 = 88,59 m² Piso Sótão = 43,46 m²</p> <p>Total = 207,47 m²</p>	<p>Área Logradouro</p> <p>Piso 00 = 66,19 m²</p> <p>Área Bruta de Construção</p> <p>153,80 + 134,11 = 287,91 m²</p>
---	---	--	--



ALÇADO NOROESTE



ALÇADO SUDESTE



ALÇADO SUDOESTE



ALÇADO NORDESTE